



Works Wonder for your Business !!

1 BusinessSMS HTTP API Specifications

Users, who wish to send message-using HTTP (Hyper Text Transfer Protocol) features or develops applications using the BusinessSMS Gateway for sending SMS messages. Gateway can be accessed through HTTP protocol by submitting values by GET or POST method.

Sample URL to Submit SMS:

<https://www.businesssms.co.in/sms.aspx?ID=XXXX&Pwd=YYYY&PhNo=919899999999,919898989999&Text=MessageText&ScheduleAt=25/03/2009+04%3A00+PM>

Sample URL to Check Account Balance:

<https://www.businesssms.co.in/sms.aspx?ID=XXXX&Pwd=YYYY>

1.1 HTTP Parameters for SMS Submission

Parameter Name	Possible Values / Function
ID	Set BusinessSMS Account UserID
Pwd	Set BusinessSMS account Password
PhNo	Comma delimited list of phone numbers (Limit to max 100 Nos. per http invoke.) All numbers must start with Country Code (91 for India) - Message may not get delivered if Country Code is not added to numbers submitted to this HTTP API
Text	Actual Message text. Length of single SMS is 160 characters. GSM handsets provides capability to receive long SMS (multi-segment) with each segment being 152 characters and SMS gets re-assembled and displayed as single SMS by receiving GSM handset. If SMS contains single Unicode character, complete SMS would be sent as Unicode SMS with 70 chars as single SMS size and 64 chars as segment size in case of multi segment Unicode SMS.
ScheduleAt (Optional)	Future Schedule Date and Time (<u>Max 365 days in future</u>) If included, SMS would be scheduled for delivery at a later date time indicated by this parameter. Format: "DD/MM/yyyy hh:mm tt"
SenderID (Optional)	By default, SenderID parameter disabled for all clients. Based on the business agreements with client, this feature can be enabled so that client can set their own SenderID for message delivery. 8 Char alphanumeric SenderID (3 Char routing information would be prefixed to this).



Works Wonder for your Business !!

DirUrl
(Optional) Set DirUrl parameter to get back delivery status on HTTP. DirUrl should also have MsgID set to ID of sms in your system. When BusinessSMS Server received delivery report from operator, DirUrl would be invoked by BusinessSMS server by adding status parameter to same DirUrl (which you have provided along with MsgID at the time of sms submission.) Use only one mobile number in HTTP API Invocation for Dir over HTTP to work properly.

Example DirUrl value:

&DirUrl=http://www.mysmswebsite.com/InBSDlr.aspx?MsgID=<ID of this sms in your system>

Example HTTP Request (from your server):

<https://www.businesssms.co.in/sms.aspx?ID=abc@prq.com&Pwd=pwd&PhNo=91xxxxxxxxxx&Text=HTTP-Sample-SMS-with-Dir-Url&DirUrl=http://www.mydomain.in/sms/inbsdldr.aspx?msgid=ef56da43>

Note: For this to work you must have webpage highlighted in gray above in place. This page will read parameters 'msgid' and 'status' and update in your database.

Example HTTP Invocation of DirUrl form BusinessSMS Server:

<http://www.mydomain.in/sms/inbsdldr.aspx?msgid=ef56da43&status=DELIVERD>

SMSType
(Optional) 0: Normal (Default, if this parameter not specified)
1: Flash SMS
3: WAP SI – Text format same as in BusinessSMS Web appl.
4: VCard – Text format same as in BusinessSMS web appl.
6: Picture SMS – <Registered PictureID>:MessageText..

PE
(Optional) Principal Entity ID as per Registration of Message sending entities enterprise on telecom operators DLT portal. If user has updated PE ID in his profile and this param is absent in http API, PE ID would be picked up from user's profile.

TemplateID SMS Template DLT ID as registered under registered header on telecom operator's DLT Platform.

TM
(Optional) Telemarketer's ID. By default CISPL's TM ID would be added. It's recommended not to provide this parameter without consultation with BusinessSMS Team.

Notes:

- Passing only 'ID' and 'Pwd' parameters will return your Ac Balance.
- Numbers would be paged if 'Text' parameter is absent or blank.
- SenderID or SenderNo would be taken from your account Details.



Works Wonder for your Business !!

1.2 HTTP Response

Contains String	Interpretation
'UserID, Password is required.'	'ID' and / or 'Pwd' parameters are blank.
'Authentication Failed.'	UserID or Password is incorrect.
'Your Account is not active'	Account is deactivated.
'Message Submitted'	Message to Phone number(s) submitted successfully.
'Insufficient Credit.'	Your account does not have sufficient balance to submit SMS batch.



Works Wonder for your Business !!

2 BusinessSMS WPF White Labeled .NET 4.5+ User Control.

- ☑ The modern WPF User Control may be used in WPF or Windows Forms application.
- ☑ Sample Visual Studio 2015 Windows Forms Integration project with source code available in Integration Kit.
- ☑ All settings and Templates saved in .json file and thus no database is required.
- ☑ The control is available in CISPLBulkSMS.dll. Add this dll as a reference in your project to use the user control.

Form1

SMS Login

Host Name
www.smsnmms.co.in

User ID
mybsuserid@myemail.com

Password

Check Balance

Open SMS Portal

Send SMS

Load from File ... Column Load Numbers

Phone No

Sender ID BLKSMS Total Numbers: 0

Templates New Template Name

SMS Text
Last typed text in SMS Textbox

1 SMS (114 characters left) :: Total Characters: 46 Append Text to SMS My SMS Signature

Schedule Delivery at 18/10/2019 12:34 Submit



Works Wonder for your Business !!

3 BusinessSMS ActiveX Control **[Deprecated]**

- ❑ Please Install and Register ActiveX Component BsSendSMS.ocx.
- ❑ Put the ActiveX control on VB form.
- ❑ ActiveX control BsSendSMS Properties and Usages is as follows.

3.1 Properties

UserID	Set businessSMS Account UserID.
Password	Set businessSMS account Password.
IsRememberID	Indicates whether user has selected "Remember UserID Option" on BsSendSMS control. (This setting and Password would be saved in system registry by BSSendSMS control.)
IsRememberPwd	Indicates whether user has selected "Remember Password Option" on BsSendSMS control. (This setting and Password would be saved in system registry by BSSendSMS control.)
PhoneNos	Phone Number(s) - comma delimited list (10 digit or, 11 digits Starting with 0 or 12 digits starting with "91")
MsgText	Actual Message text. Length of single SMS is 160 characters. GSM handsets provides capability to receive long SMS (multi-segment) with each segment being 152 characters and SMS gets re-assembled and displayed as single SMS by receiving GSM handset. If SMS contains single Unicode character, complete SMS would be sent as Unicode SMS with 70 chars as single SMS size and 64 chars as segment size in case of multi segment Unicode SMS.
ScheduleTime	Blank for immediate SMS submission. Schedule DateTime in format 'DD/MM/YYYY hh:mm AM/PM' for SMS Scheduling (Max 365 days.)
LogoFilePath	Set your Own Logo or Image by setting path of image. For Unbranded (White Label) usage, set this property to blank string. (Eg. BsSendSMS1.LogoFilePath = "")
TemplatePath	For Saving your Messages, Please install the Database SMSTemplate.mdb to Specific location and provide the path to this property.

3.2 Methods

Login	Call after setting properties <i>UserID</i> and <i>Password</i> and before method <i>SubmitSMS</i> .
SubmitSMS	Send SMS - used when SMS to be sent silently without displaying BusinessSMS Screen. Returns 'True' if SMS submit successful, else returns 'False'.

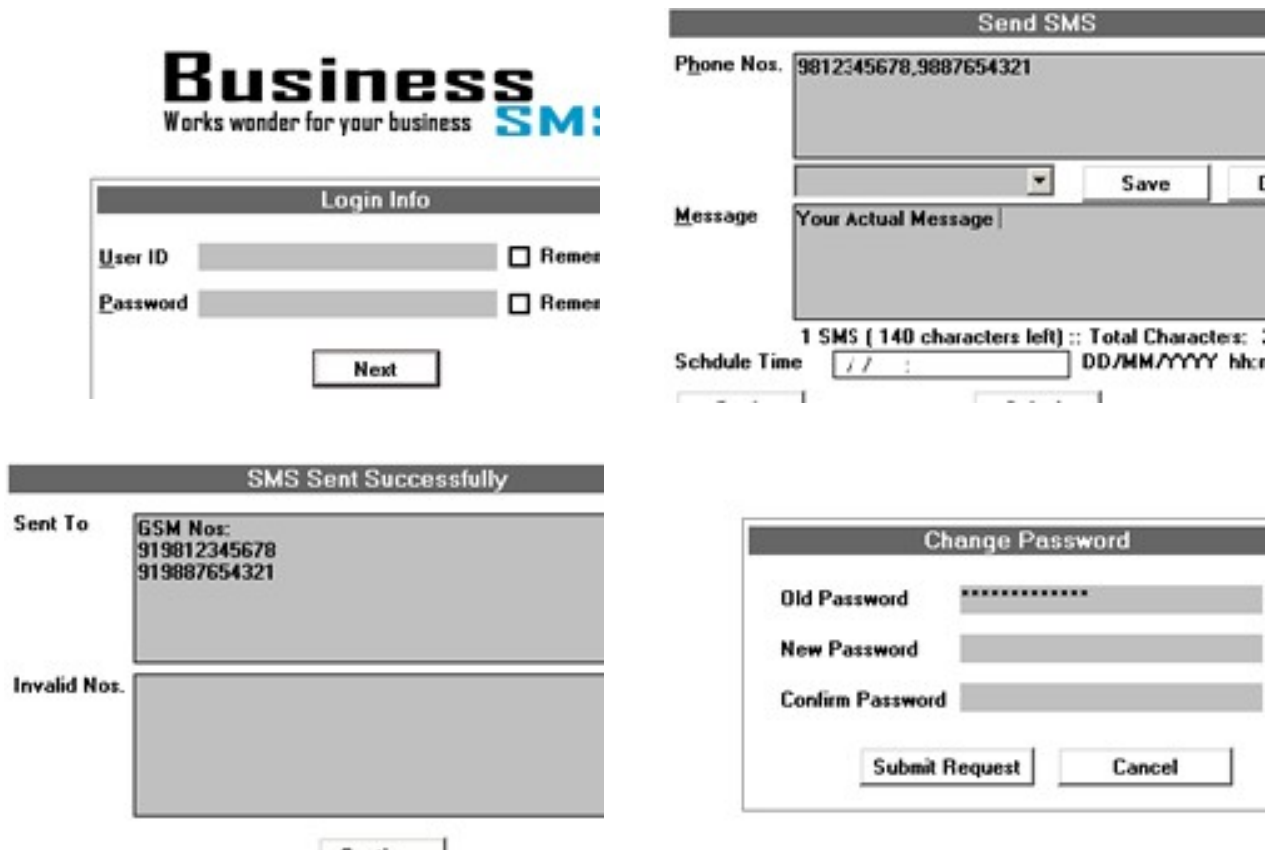


Works Wonder for your Business !!

3.3 Dependencies

- MSINET.OCX
- TABCTL32.OCX
- Stdole2.tlb
- Msado25.tlb

3.4 ActiveX Control Screen Shots



Unbranded (White label) SMS Portal, HTTP API and Excel Based Application for sending Custom one to one SMS or Bulk SMS is available.

For any technical queries, feel free to contact our technical support team at info@businesssms.co.in